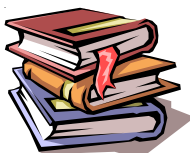


Bi feedback

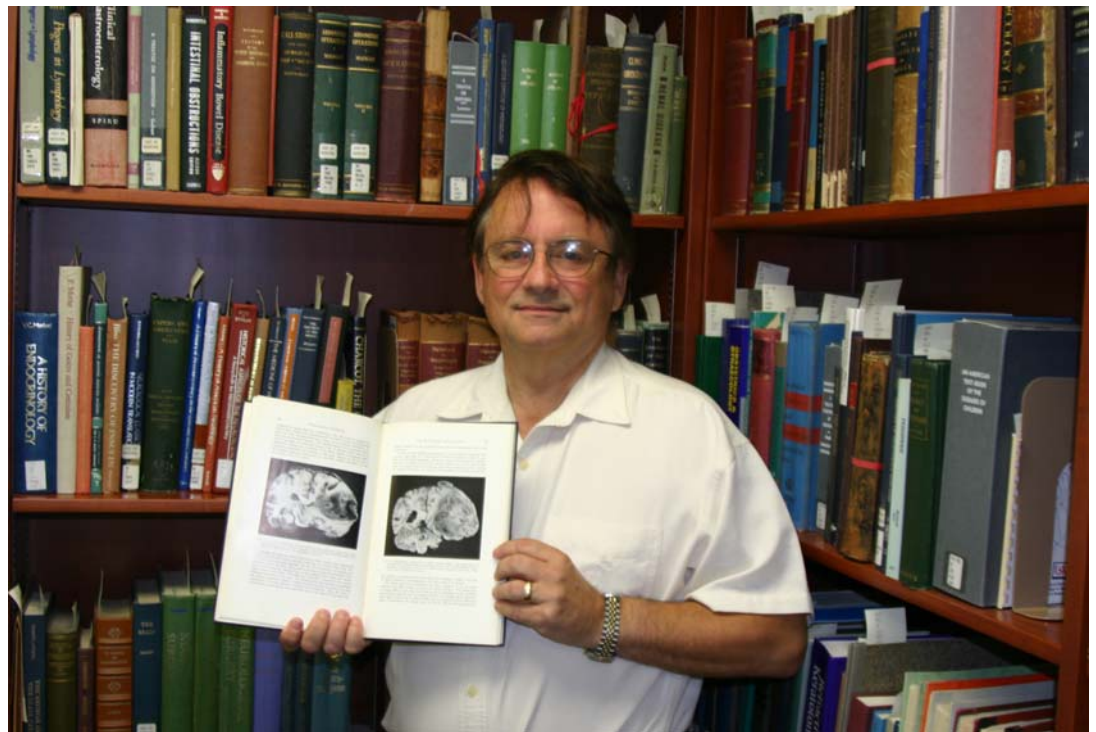
University of South Alabama Biomedical Library Newsletter
<http://southmed.usouthal.edu/library/> Issue #67 Summer 2006

In This Issue:

| | |
|------------------------------------|----|
| Book Donation..... | 1 |
| Library Hours & Phone Numbers..... | 2 |
| Konstantyn Sylin Art Exhibit..... | 2 |
| AccessMedicine..... | 2 |
| Exam Master Online..... | 3 |
| EBSCO Visual Search..... | 3 |
| Scopus Citation Tracker..... | 4 |
| LactMed..... | 5 |
| TDNet.Journal Alerts..... | 5 |
| Acquisitions..... | 6 |
| Faculty Publications.. | 8 |
| Web WISER..... | 9 |
| Clinical Pharmacology..... | 9 |
| 1887 Nurses..... | 9 |
| Staff News..... | 10 |
| MASA..... | 10 |
| SOUTHmed Update..... | 10 |



Baugh Biomedical Library's Rare Book Collection Grows by Adding Cushing's *Intracranial Tumours*



To honor Dr. Betsy Bennett, former Associate Dean, Student Affairs, the USA College of Medicine Medical Alumni Association has again made a generous donation to the Biomedical Library. Through their generosity, the Biomedical Library had the opportunity to purchase a rare book of historical significance for our special Historical Collection. The book selected was Harvey Cushing's *Intracranial Tumours*, published in 1932. The *Garrison-Morton Medical Bibliography*, a selective bibliography of major books which have advanced the science of medicine, says of this volume: "Cushing's operating technique reduced the mortality rate dramatically in intracranial surgery. This was his last published report on the statistical results of brain tumours as a whole." The addition of this book to our collection further enriches our collection, providing an historical perspective on the advancement of medicine. We are indebted to the USA Medical Alumni Association.

In 2003 a USA Medical Alumni Association donation made another purchase of historical importance possible. The first American edition of Gray's *Anatomy*, published in 1859, was purchased in honor of Dr. William A. Gardner, professor emeritus of pathology and former Interim Dean.

If you would like to make a donation to the library, contact the Directors office at (251) 460-6885.

-- J. Michael Lindsay

Konstantyn Sylin Art Exhibit

Where: Third Floor Art Gallery, University Library of the University of South Alabama.

When: May 23-July 29, 2006

Without any special training, Konstantyn Sylin was accepted to the Moscow Architectural and Art College and proved to be an exceptionally talented graduate.

Konstantyn Sylin has been painting landscapes, still life, portraits, and abstract compositions professionally for over 45 years and is now widely recognized in the Ukraine, Russia, and beyond.

He has traveled throughout the world and painted and exhibited in more than 70 group and 15 personal exhibitions in the Ukraine, Russia, Italy, France, Germany, Finland, Japan, and the USA.

His personal USA exhibits include "The Holy Russia" at the Loveland Museum in Colorado and "Sylin Watercolor Wonders" at the Canyon Gallery in Denver.

He is a recipient of many art awards and his watercolors are included in prestigious public and private collections throughout the world. An album of his "Gerlitz Architectural Landscapes" was published in Germany in 1996.

He has moved to live with family in Pensacola, where he has recently received the Cinco Banderas purchase award.

-- Ginger M. Edgar

McGraw-Hill's ACCESSMedicine

Trusted Content. Instant Answers.

AccessMedicine is a resource containing the full-text versions of a number of basic science and clinical medical textbooks. This resource includes both the Lange Educational Library series of titles, as well as AccessMedicine's Clinical Library collection. Major titles include Hurst's The Heart, Harrison's Online, and Metabolic and Molecular Bases of Inherited Disease (MMBID).

AccessMedicine also includes a USMLE resource that can be used to supplement other study guides. Other features include a drug index, Diagnosaurus, McGraw-Hill's differential diagnosis tool, Practice Guidelines (from Current Practice Guidelines in Primary Care, 2006), patient education information, and health news.

AccessMedicine includes a personalization feature, My AccessMedicine, allowing users to download content to their PDA, or to set up Bookmarks in Access Medicine.

This resource provides a solid group of textbooks. AccessMedicine can be accessed at <http://www.accessmedicine.com/> or via the Biomedical Library homepage (click on Databases and Resources).

-- Jie Li

LIBRARY SERVICE NUMBERS

General Information:

| | |
|------------|----------------|
| Campus | (251) 460-7043 |
| UMC | (251) 471-7855 |
| C&W | (251) 415-8586 |
| Fax Campus | (251) 460-7638 |
| UMC | (251) 471-7857 |
| C&W | (251) 415-8587 |

Administration:

| | |
|--|----------------|
| Director, Tom Williams | (251) 460-6885 |
| twilliam@bbl.usouthal.edu | |
| Secretary, Bonnie Seibert | (251) 460-6885 |

Public Services and Education:

| | |
|--|----------------|
| Jie Li | (251) 460-7044 |
| jli@jaguar1.usouthal.edu | |

Reference Services

| | |
|--------|----------------|
| Campus | (251) 460-7044 |
| UMC | (251) 471-7855 |
| C&W | (251) 415-8586 |

Circulation

| | |
|--------|----------------|
| Campus | (251) 460-7043 |
| UMC | (251) 471-7855 |
| C&W | (251) 415-8586 |

Interlibrary Loan

| | |
|--|----------------|
| | (251) 460-6891 |
|--|----------------|

Regional and Technical Services:

| | |
|--|----------------|
| Judy Burnham | (251) 460-6888 |
| jburnham@jaguar1.usouthal.edu | |

REGULAR HOURS

May 12, 2006 -
August 13, 2006

Charles M. Baugh Library (Campus)

| | |
|-----------------|------------------|
| Monday-Thursday | 7:15am - 10:00pm |
| Friday | 7:15am - 5:00pm |
| Saturday | 9:00am - 6:00pm |
| Sunday | 1:00pm - 10:00pm |

Medical Center Site (staffed hours)

| | |
|-----------------|-----------------|
| Monday-Thursday | 8:00am - 6:00pm |
| Friday | 8:00am - 5:00pm |
| Saturday | 9:00am - 5:00pm |
| Sunday | Not staffed |

Children's and Women's Site

| | |
|-------------------|-----------------|
| Monday-Friday | 8:00am - 5:00pm |
| Saturday & Sunday | Closed |

Email - medlib@bbl.usouthal.edu
<http://southmed.usouthal.edu/library>

Holiday and Extended Hours

The libraries will observe these holidays: Memorial Day, Independence Day. See posted hours at our website.

Extended hours for finals: Friday, July 21 and Saturday, July 22. Campus location will be open until 10:00pm.

BIOFEEDBACK, New Series, Issue #67, Summer 2006

Biofeedback, the Biomedical Library Newsletter, a publication of the University of South Alabama Biomedical Library, is published at irregular intervals. Editor: Geneva Bush Staggs. Contributors to this issue were Judy Burnham, Clista Clanton, Ginger M. Edgar, Jie Li, J. Michael Lindsay, and Geneva Staggs. Comments should be addressed to Geneva Staggs, Medical Center Library, University of South Alabama, Mobile, AL 36617-2293 or by email at: gstaggs@bbl.usouthal.edu.

EXAM MASTER Now Available: USMLE and Board Exams Test Prep

The Biomedical Library has recently subscribed to EXAM MASTER OnLine, a newly updated USMLE and board preparation and review tool that provides access to thousands of basic and clinical sciences questions.

The interface allows for quick and easy navigation, and provides students with the ability to create very customized practice exams and study blocks. Detailed score reporting helps the student target their studies and identify strong and weak areas.

In November, EXAM MASTER completely revised the testing interface to closely match what is actually used on the USMLE exam. This new test mode interface has excellent navigational tools, and includes other features found on the exam including the ability to attach notes to each question.

This system is in use at over 40 academic health centers and teaching hospitals.

- * Thousands of questions and explanations covering what you need to know
- * USMLE data organized according to NBME USMLE examination guidelines
- * Medical Subject outlines allowed for targeted learning
- * Timed test and study modes
- * Provides the look and feel of the board exams
- * Detailed test results and examination history provided for each user
- * Allows for rapid, targeted learning in as short a time as possible

See for yourself. Click on Exam Master Online on the library's Database/Resources webpage (<http://southmed.usouthal.edu/library/resources/index.htm>) to register and start studying. Registration is free.

EBSCO Visual Search

Visual Search is a new and innovative way to search EBSCOhost databases (CINAHL Plus with full text, Pre-CINAHL, Nursing and Allied Health Collection: Comprehensive, and others). When the Visual Search tab appears (on the green bar), you can search EBSCOhost and have your results sorted by topic in an interactive, visual map. To show more details about your results, click on the circles or squares inside the map.

Circles represent the categories into which results are grouped. Larger circles contain more subcategories and links than smaller ones. Click on any category to zoom in and explore its contents. Click outside of a category's border to zoom back.

Squares represent the articles. The same square can appear in multiple circles. To open an article's citation, click on a square. You can zoom in as deep as you like and read specific articles (shown as squares) presented in the map.

NOTE: Java must be installed on your computer and JavaScript must be enabled on your web browser in order to use Visual Search.

-- AVL Help Desk



Dissertation and Thesis Writers

The accuracy of references in these documents is as important to future research as it is to the academic credibility and reputation of the author and the University.

Students in Medicine, Nursing and Allied Health Professions can insure the accuracy of references by bringing reference pages to the library to have them checked by a librarian before submitting the paper for the final approval process. Citations may also be attached to an e-mail message addressed to Geneva Staggs at: gbush@jaguar1.usouthal.edu.

-- Geneva Staggs

University of South Alabama BIOMEDICAL LIBRARY



Registered Entry page

USMLE and Medical Specialty Board Exams

EXAM MASTER OnLine™

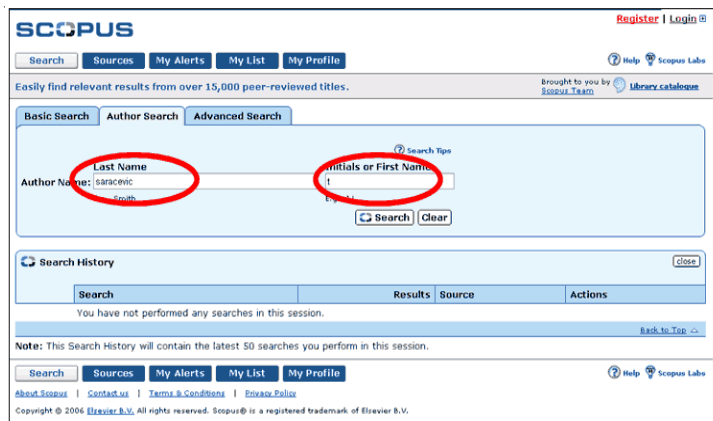
BOOKMARK THIS PAGE ONLY ...to regain access later

CLICK
to start

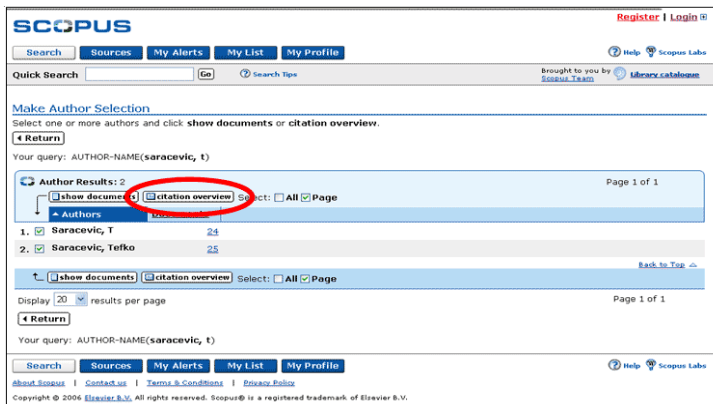
-- Geneva Staggs

The Scopus Citation Tracker provides you with a simple way to investigate citations in a number of different ways. The example below gives you a simple overview of how you can use the Author Search to review the citations to your chosen author's work.

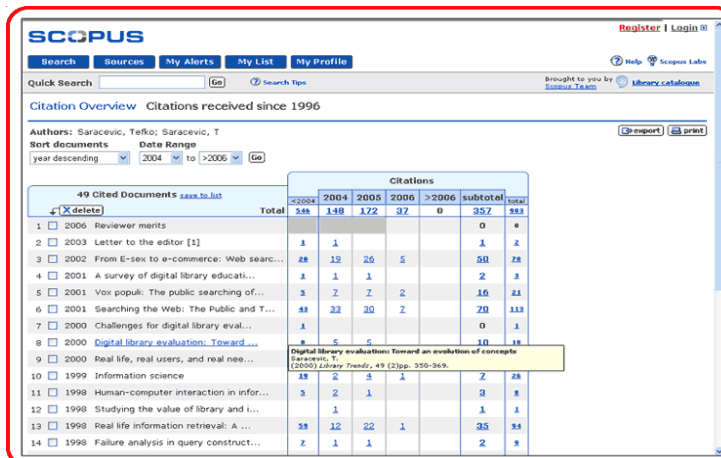
1) Perform an author search.



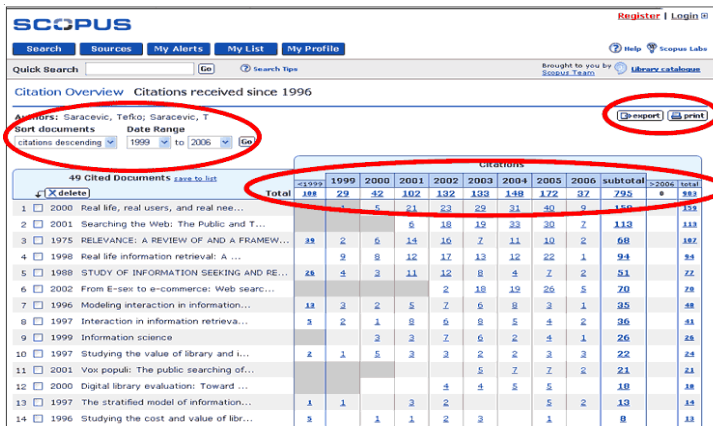
2) Select the author of your choice and click on Citation Overview.



3) After the Citation Overview is generated, you can view the number of citations your author's articles have received per year and in total. You can go back to the record by clicking on the title. You can also change the sorting order and select the data ranges.



4) Additionally, you can export and print the Citation Overview.



-- Judy Burnham

LactMed: New Database on Drugs and Lactation

<http://toxnet.nlm.nih.gov/cgi-bin/sis/htmlgen?LACT>

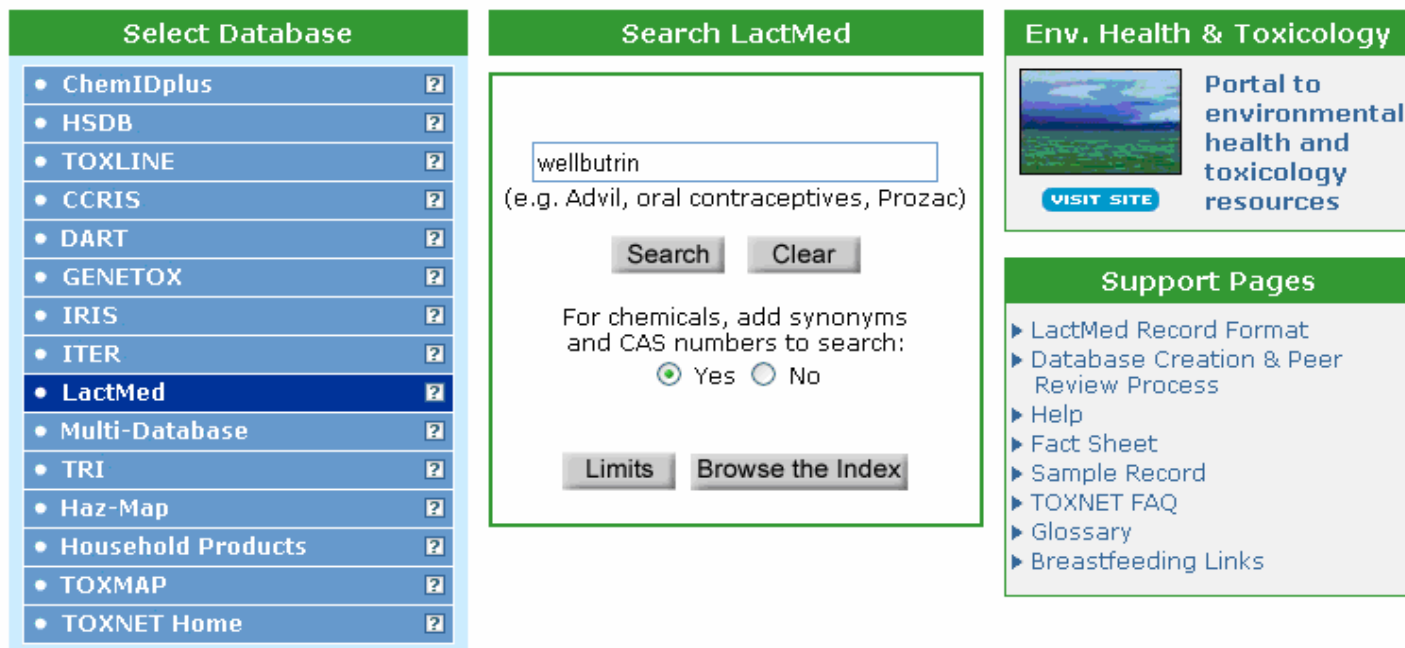


United States National Library of Medicine (NLM) TOXNET Toxicology Data Network

TOXNET PDA Access | SIS Home | About Us | Site Map & Search | Contact Us

▶ Env. Health & Toxicology ▶ TOXNET ▶ LactMed

Drugs and Lactation Database (LactMed) - A peer-reviewed and fully referenced database of drugs to which breastfeeding mothers may be exposed. Among the data included are maternal and infant levels of drugs, possible effects on breastfed infants and on lactation, and alternate drugs to consider.



Select Database

- ChemIDplus
- HSDB
- TOXLINE
- CCRIS
- DART
- GENETOX
- IRIS
- ITER
- **LactMed**
- Multi-Database
- TRI
- Haz-Map
- Household Products
- TOXMAP
- TOXNET Home

Search LactMed

wellbutrin
(e.g. Advil, oral contraceptives, Prozac)

Search Clear

For chemicals, add synonyms and CAS numbers to search:
 Yes No

Limits Browse the Index

Env. Health & Toxicology

Portal to environmental health and toxicology resources

VISIT SITE

Support Pages

- ▶ LactMed Record Format
- ▶ Database Creation & Peer Review Process
- ▶ Help
- ▶ Fact Sheet
- ▶ Sample Record
- ▶ TOXNET FAQ
- ▶ Glossary
- ▶ Breastfeeding Links

LactMed contains over 450 drug records geared towards both health practitioners and nursing mothers. LactMed includes information on maternal levels in breast milk, infant levels in blood, potential effects in breastfeeding infants and on lactation itself, the American Academy of Pediatrics category indicating the level of compatibility of the drug with breastfeeding, and alternate drugs to consider. Also included are references, nomenclature information such as the drug's Chemical Abstract Service's (CAS) Registry number and its broad drug class.

LactMed can be searched together with TOXNET's other databases in a multi-database environment, to obtain other relevant information about drugs. As a work in progress, LactMed will continue to expand with additional drugs and be enhanced with other substances, such as industrial chemicals and radiation.

-- Clista Clanton

Journal Alert Service Available



TDNet's journal alert service provides current awareness of journal articles as they are published. From the Biomedical Library's website, click on Online Journal & Books, then click on "My TDNet" (user needs to register to use this service). From "My TDNet", users may choose journal titles or keywords for alerting purposes. Once this feature is ordered, users will receive weekly updates of linked contents, as they become available. Results are received via a weekly email to the requestor.

Since all journals in this database have full text, user may click on the "full text" link of any article to get the full text.

-- Jie Li

SELECTED RECENT ACQUISITIONS

Location of item is in brackets following the call number.

B = Baugh Biomedical Library (Campus)

CW = Children's & Women's Hospital Library

MC = Medical Center Library

Ref = Reference collection at indicated site.

QS ANATOMY

QS 18.2 S671c 2004. **[B]**
Clinical anatomy: an illustrated review with questions and explanations, 4th ed. / Richard S. Snell Philadelphia: Lippincott Williams & Wilkins, 2004.

QS 604 S126L 2005. **[B]**
Langman's essential medical embryology / T. W. Sadler. Lippincott, Williams & Wilkins, 2005.

QV PHARMACOLOGY

QV 735 B724c 2004. **[MC]**
The complete natural medicine guide to the 50 most common medicinal herbs, 2nd ed. / Heather Boon and Michael Smith. R. Rose, 2004.

QZ PATHOLOGY

QZ 50 G3244 2004. **[MC]**
Genetic disorders and the fetus: diagnosis, prevention and treatment, 5th ed. / Aubrey Milunsky. Johns Hopkins University Press, 2004.

QZ 50 S961g 2005. **[CW Ref]**
Genetics for pediatricians / Mohnish Suri and Ian D. Young. Remedica, 2005.

W MEDICAL PROFESSION

W 20.5 D422i 2005. **[B]**
Introduction to research: understanding and applying multiple strategies / Elizabeth DePoy and Laura N. Gitlin. Elsevier/Mosby, 2005.

WA PUBLIC HEALTH PROFESSIONS

WA 108 C641 2004. **[MC]**
Clinical preventive medicine, 3rd ed. / Richard S. Lang and Donald D. Hensrud, eds. American Medical Association, 2004.

WC COMMUNICABLE DISEASES

WC 100 S964 2004. **[B]**
Susceptibility to infectious diseases: the importance of host genetics / Richard Bellamy, ed. Cambridge University Press, 2004.

WE MUSCULOSKELETAL SYSTEM

WE 830 G815 2005. **[CW Ref]**
Green's operative hand surgery, 5th ed. / David P. Green et al, eds. Elsevier/Churchill Livingstone, 2005.

WI DIGESTIVE SYSTEM

WI 102 C791c 2005. **[B]**
Clinical anatomy & physiology of the swallow mechanism. / Kim Corbin-Lewis, Julie M. Liss, and Kellie L. Sciortino. Thomson Delmar Learning, 2005.

WL NERVOUS SYSTEM

WL 307 A912 2005. **[B]**
The auditory cortex: a synthesis of human and animal research / Reinhard K. Konig, ed. Lawrence Erlbaum Associates, 2005.

WL 140 N4945 2006. **[CW Ref]**
Neurologic disease in women, 2nd ed. / Peter W. Kaplan. Demos Medical Pub., 2006.

WL 300 D262f 2005. **[MC]**
Fundamentals of neurologic disease: an introductory text / Larry E. Davis, Molly K. King, and Jessica L. Schultz. Demos Medical Pub., 2005.

WL 340 I32 2005. **[MC]**
Imitators of epilepsy, 2nd ed. / Peter W. Kaplan and Robert S. Fisher. Demos, 2005.

WL 340.2 A244s 2006. **[B]**
Advances in the sign language development of deaf children. / Brenda Schick, Marc Marschark, and Patricia Elizabeth Spencer, eds. Oxford University Press, 2006.

WL 340.2 B566a 2005. **[B]**
Augmentative & alternative communication: supporting children & adults with complex communication needs, 3rd ed. / David R. Beukelman, and Pat Mirenda. Paul H. Brookes Pub. Co., 2005.

WL 340.2 D751t 2005. **[B]**
Teaching communication skills to students with severe disabilities, 2nd ed. / June E. Downing. Paul H. Brookes Pub.

Co., 2005.

WL 340.2 D 858m 2005. **[B]**
Motor speech disorders: substrates, differential diagnosis, and management, 2nd ed. / Joseph R. Duffy. Elsevier Mosby, 2005.

WL 340.2 G926a 2006. **[B]**
Approaches to discourse in dementia. / Jacqueline A. Guendouzi, and Nicole Muller. Lawrence Erlbaum, 2006.

WL 340.2 H462t 2006. **[B]**
Treatment protocols for language disorders in children / M.N. Hegde. Plural, 2006.

WL 340.2 M465r 2006. **[B]**
Research and statistical methods in communication sciences and disorders, 1st ed. / David L. Maxwell and Eiki Satake. Thomson/Delmar Learning, 2006.

WL 340.2 M982n 2006. **[B]**
Neurogenic disorders of language: theory driven clinical practice. / Laura L. Murray and Heather M. Clark. Thomson Delmar Learning, 2006.

WL 340.2 P574 2005. **[B]**
Phonological disorders in children: clinical decision making in assessment and intervention. / Alan G. Kamhi and Karen E. Pollock, eds. Paul H. Brookes, 2005.

WL 340.2 S655L 2005. **[B]**
Literacy and augmentative an alternative communication / Martine Smith. Elsevier Academic Press, 2005.

WL 340.5 C437 2004. **[B]**
Challenging aphasia therapies: broadening the discourse and extending the boundaries / Judith Felson Duchan and Sally Byng, eds. Psychology Press, 2004.

WL 340.5 W628c 2005. **[B]**
A cognitive neuropsychological approach to assessment and intervention in aphasia: a clinician's guide. / Anne Whitworth, Janet Webster and David Howard. Psychology Press, 2005.

WL 348 L995 2004. **[B]**
Lysosomal disorders of the brain: recent advances in molecular and cellular pathogenesis and treatment / Frances M. Platt and Steven U. Walkley, eds. Oxford University Press, 2004.

WL 359 A8874 2004. **[MC]**
Atypical parkinsonian disorders / Irene Litvan, ed. Humana Press, 2004.

WL 360 M959 2005. [MC]
Multiple sclerosis: etiology, diagnosis and new treatment strategies / Michael J. Olek, ed., with a foreword by Howard L. Weiner. Humana Press, 2005.

WM PSYCHIATRY

WM 170 D6102 2004. [MC]
Disaster psychiatry: intervening when nightmares come true / Anand Pandya and Craig L. Katz, eds., et al. Analytic Press, 2004.

WM 203.5 S586a 2006. [B]
Assessing and developing communication and thinking skills in people with autism and communication difficulties: a toolkit for parents and professionals / Kate Silver. Jessica Kingsley Publishers, 2005.

WM 475 G968s 2006. [B]
Stuttering: an integrated approach to its nature and treatment, 3rd ed. / Barry Guitar. Lippincott, Williams & Wilkins, 2006.

WM 475 L712 2003. [B]
Lidcombe program of early stuttering intervention: a clinician's guide / Mark Onslow, Ann Packman, and Elisabeth Harrison, eds. Pro-Ed, 2003.

WM 475 P119t 2004. [B]
Theoretical issues in stuttering / Ann Packman and Joseph S. Attanasio. Psychology Press, 2004.

WM 475 Y14e 2005. [B]
Early childhood stuttering for clinicians by clinicians / Ehud Yairi and Noline Grinager Ambrose. PRO-ED, 2005.

WP GYNECOLOGY

WP 120 B747o 2005. [B]
Our bodies, ourselves: a new edition for a new era, 35th anniversary edition / The Boston Women's Health Book Collective. Simon & Schuster, 2005.

WS PEDIATRICS

WS 105.5 B573 2005. [B]
Beyond nature-nurture: essays in honor of Elizabeth Bates / Michael Tomasello and Dan Isaac Slobin, eds. Lawrence Erlbaum Associates Publishers 2005.

WS 105.5 B595 2004. [B]
Bilingual language development and disorders in spanish-english speakers. / Brian A. Goldstein, ed. Paul H. Brookes Pub., 2004.

WS 105.5 G327d 2004. [B]
Dual language development and disorders: A handbook on bilingualism and second language learning / Fred Genessee, Johanne Paradis, and Martha B. Crago. Paul H. Brookes Pub. 2004.

WS 105.5 W363h 2004. [B]
Weaving a lexicon / D. Geoffrey Hall and Sandra R. Waxman. MIT, 2004.

WS 340 P6977 2006. [CW]
The placenta and neurodisability / Philip Baker and Colin Sibley, eds. Mac Keith Press, 2006.

WV OTOLARYNGOLOGY

WV 250 K66 2002. [MC]
Color atlas of microneurosurgery of acoustics neurinomas. / Wolfgang Th. Koos, Christian Matula, and Johannes Lang. Thieme, 2002.

WV 271 E58 2005. [B]
Enhancing communication skills of deaf & hard of hearing children in the mainstream. / James J. Mahshie, et al. Thomson Delmar Learning, 2005.

WV 271 M482w 2004. [B]
The world of deaf infants: a longitudinal study / Kathryn P. Meadow-Orlans, Patricia Elizabeth Spencer, and Lynne Sanford Koester. Oxford University Press, 2004.

WV 272 H236p 2005. [B]
The handbook of speech perception / David B. Pisoni and Robert E. Remez. Blackwell Pub., 2005.

WV 272 P715 2004. [B]
Plasticity of the auditory system / Thomas N. Parks et al., eds. Springer, 2004.

WV 276 O98a 2005. [B]
Aural rehabilitation for people with disabilities / John M.A. Oyiborhoro. Elsevier Academic Press, 2005.

WV 276 T979f 2004. [B]
Foundations of aural rehabilitation: children, adults, and their family members / Nancy Tye-Murray. Delmar Learning, 2004.

WV 500 C614 2006. [B]
Classification manual for voice disorders I / Katherine Verdolini, Clark A. Rosen, and Ryan C. Branski, eds., et al. Lawrence Erlbaum, 2006.

WV 500 C725u 2006. [B]
Understanding voice problems: the physiological perspective for diagnosis and treatment, 3rd ed. / Raymond H. Colton, Janina K. Casper, and Rebecca Leonard. Lippincott, Williams & Wilkins, 2006.

WV 500 S253p 2005. [B]
Professional voice: the science and art of clinical care, 3rd ed. / Robert Thayer Sataloff. Plural Pub., 2005

WV 501 O61m 2004. [B]
Optimality theory in phonology / John J. McCarthy, ed. Blackwell Pub., 2004.

WV 501 P574 2005. [B]
Phonological encoding and monitoring in normal and pathological speech / Robert J. Hartsuiker, et al. Psychology Press, 2005.

WY NURSING

WY 18 T2516 2006. [B]
Teaching evidence-based practice in nursing: a guide for academic and clinical settings / Rona F. Levin and Harriet R. Feldman, eds. Springer Pub. Co., 2006.

WY 20.5 P769e 2006. [B]
Essentials of nursing research: methods, appraisal, and utilization, 6th ed. / Denise F. Polit and Cheryl Tatano Beck. Lippincott, Williams & Wilkins, 2006.

WY 100 D546e 2005. [B]
Evidence-based nursing: a guide to clinical practice / Alba DiCenso, Gordan Guyatt, and Donna Ciliska. Elsevier Mosby, 2005.

WY 100 I6128 2006. [B]
Introduction to evidence-based practice in nursing and health care / Kathy Malloch and Tim Porter-O'Grady. Jones and Bartlett, 2006.

WY 100 M526e 2005. [B]
Evidence-based practice in nursing & healthcare / Bernadette Mazurek Melnyk. Lippincott Williams & Wilkins, 2005.

WZ HISTORY OF MEDICINE

WZ 100 B473b 2000. [B]
Tom's odyssey: a surgical profile / Thomas J. Beno. Alt Pub., 2000.

WZ 100 H269 2002. [B]
The academic surgeon: an autobiography / James D. Hardy. Magnolia Mansions Press, 2002.

Faculty Publications

Listed below are journal publications by USA faculty indexed in MEDLINE, CINAHL, and Web of Science for August through April 2006. Department chairs are asked to submit citations of recent publications by their department members. If we missed your latest contribution to the literature, please notify the Editor so it can be included in a future listing. New faculty are encouraged to submit their latest publications to the Editor (gstaggs@bbl.usouthal.edu).

- Almeida OD Jr. Microlaparoscopy and a GnRH agonist: a combined minimally invasive approach for the diagnosis and treatment of occlusive salpingitis isthmica nodosa associated with endometriosis. *Journal of the Society of Laparoendoscopic Surgeons* 9(4):431-3, 2005 Oct-Dec.
- Alvarez DF. King JA. Townsley MI. Resistance to store depletion-induced endothelial injury in rat lung after chronic heart failure. *American Journal of Respiratory & Critical Care Medicine* 172(9):1153-60, 2005 Nov 1.
- Amato A. Marlowe KF. Severe case of phenytoin-induced anticonvulsant hypersensitivity syndrome. *American Journal of Health-System Pharmacy* 62(21):2295-7, 2005.
- Audia JP. Roberts RA. Winkler HH. Cysteine-scanning mutagenesis and thiol modification of the Rickettsia prowazekii ATP/ADP translocase: characterization of TMs IV-VII and IX-XII and their accessibility to the aqueous translocation pathway *Biochemistry*. 45(8):2648-56, 2006 Feb 28.
- Ballard ST. Trout L. Garrison J. Inglis SK. Ionic mechanism of forskolin-induced liquid secretion by porcine bronchi. *American Journal of Physiology - Lung Cellular & Molecular Physiology* 290(1):L97-104, 2006 Jan.
- Barik S. Silence of the transcripts: RNA interference in medicine. *Journal of Molecular Medicine* 83(10):764-73, 2005 Oct.
- Benoit JN. Taylor MS. Vascular reactivity following ischemia/reperfusion. *Frontiers in Bioscience* 2:e28-33, 1997.
- Burnham JF. Scopus database: a review. *Biomedical Digital Libraries [Electronic Resource]* 3:1, 2006.
- Clark LE. DiPalma JA. Safety issues regarding colonic cleansing for diagnostic and surgical procedures. *Drug Safety* 27(15):1235-42, 2004.
- Dagenais PA. Brown GR. Moore RE. Speech rate effects upon intelligibility and acceptability of dysarthric speech. *Clinical Linguistics and Phonetics* 20(2/3):141-8, 2006 Apr-May.
- Downey JM. Cohen MV. Unraveling the mysteries of classical preconditioning. *Journal of Molecular & Cellular Cardiology* 39(6):845-8, 2005 Dec.
- Ellis CN. McAlexander WW. Enterocolitis associated with cocaine use. *Diseases of the Colon & Rectum* 48(12):2313-6, 2005 Dec.
- Estrada B. Pediatric bulletin. New immunization strategies against pertussis. *Infections in Medicine* 23(1):16, 2006 Jan.
- Frye KE. Luterman A. Decreased incidence of hypertrophic burn scar formation with the use of collagenase, an enzymatic debriding agent. *Wounds: A Compendium of Clinical Research and Practice* 17(12):332-6, 2006 Jan.
- Gillespie MN. Ziel KA. Grishko V. Campbell CC. Wilson GL. Genomic threats from physiological signals in lung vascular cells. *Chest* 128(6 Suppl):611S-612S, 2005 Dec.
- Gonzalez RP. Cohen M. Bosarge P. Ryan J. Rodning C. Prophylactic inferior vena cava filter insertion for trauma: intensive care unit versus operating room. *American Surgeon* 72(3):213-6, 2006 Mar.
- Greiner F. Quindlen E. Rothrock J. The alcoholic woman with a headache and unsteady gait. *Headache* 45(9):1255, 2005 Oct.
- Hendon SE. DiPalma JA. U.S. practices for colon cancer screening. *Keio Journal of Medicine* 54(4):179-83, 2005 Dec.
- Irion GL. Stone S. Fischer T. Finch VP. Phillips LR. Frederickson C. Accelerated closure of biopsy-type wounds by mechanical stimulation. *Advances in Skin & Wound Care* 19(2):97-102, 2006 Mar.
- Labbe E. Herbert D. Haynes J. Physicians' attitude and practices in sickle cell disease pain management. *Journal of Palliative Care* 21(4):246-51, 2005.
- Mahmood MA. Voorhees ME. Parnell M. Zweifler RM. Transcranial Doppler ultrasonographic evaluation of middle cerebral artery hemodynamics during mild hypothermia. *Journal of Neuroimaging* 15(4):336-40, 2005 Oct.
- Manci EA. Hillery CA. Bodian CA. Zhang ZG. Luty GA. Collier BS. Pathology of Berkeley sickle cell mice: similarities and differences with human sickle cell disease. *Blood* 107(4):1651-8, 2006 Feb 15.
- McGee DJ. Kumar S. Viator RJ. Bolland JR. Ruiz J. Spadafora D. Testerman TL. Kelly DJ. Pannell LK. Windle HJ. Helicobacter pylori thioredoxin is an arginase chaperone and guardian against oxidative and nitrosative stresses. *Journal of Biological Chemistry* 281(6):3290-6, 2006 Feb 10.
- McGuinness TM. Youth in mind. Marriage, divorce, and children. *Journal of Psychosocial Nursing and Mental Health Services* 44(2):17-20, 2006 Feb.
- McGuinness TM. Fogger SA. Hyper-anxiety in early sobriety: psychopharmacological treatment strategies. *Journal of Psychosocial Nursing & Mental Health Services* 44(1):22-7, 46-7, 2006 Jan.
- McGuinness TM. Ryan R. Robinson CB. Protective influences of families for children adopted from the former Soviet Union. *Journal of Nursing Scholarship* 37(3):216-21, 2005 3rd Quarter.
- Nelder MP. McCreadie JW. Beard CE. Laboratory investigations of trichomycete prevalence, abundance and fecundity in a Smittium-simulii model. *Mycologia* 97(2):338-45, 2005 Mar-Apr.
- Olden KW. Crowell MD. Cilansetron. *Drugs of Today* 41(10):661-6, 2005 Oct.
- Olden KW. The use of antidepressants in functional gastrointestinal disorders: new uses for old drugs.[see comment]. *CNS Spectrums* 10(11):891-6, 2005 Nov.
- Olden KW. Treatment of noncardiac chest pain of psychological origin. *Current Treatment Options in Gastroenterology* 9(1):51-8, 2006.
- Op't Holt TB. Problem-based and case-based learning in respiratory care education. *Respiratory Care Clinics of North America* 11(3):489-504, 2005 Sep.
- Philipp S. Cui L. Ludolph B. Kelm M. Schulz R. Cohen MV. Downey JM. Desferoxamine and ethyl-3,4-dihydroxybenzoate protect myocardium by activating NOS and generating mitochondrial ROS. *American Journal of Physiology - Heart & Circulatory Physiology* 290(1):H450-7, 2006 Jan.
- Pollock JM. Green A. Donnell C. Dyess DL. Tucker JA. Metaplastic breast carcinoma with osseous differentiation: a case report. *Southern Medical Journal* 99(2):168-70, 2006 Feb.
- Pruitt B. Keeping respiratory syncytial virus at bay. *Nursing* 35(11):62-4, 2005 Nov.
- Pruitt B. Ventilation for life. Evaluating outcomes in mechanical ventilation. *AARC Times* 29(12):22, 24, 26 passim, 2005 Dec.
- Pruitt B. Jacobs M. Best-practice interventions: How can you prevent ventilator-associated pneumonia? *Nursing* 36(2):36-41; quiz 41-2, 2006 Feb.
- Rodman DM. Harral J. Wu S. West J. Hoedt-Miller M. Reese KA. Fagan K. The low-voltage-activated calcium channel CAV3.1 controls proliferation of human pulmonary artery myocytes. *Chest* 128(6 Suppl):581S-582S, 2005 Dec.
- Rohling ML. Demakis GJ. A meta-analysis of the neuropsychological effects of occupational exposure to mercury. *Clinical Neuropsychologist* 20(1):108-32, 2006 Feb.
- Rohrer JW. Barsoum AL. Coggin JH Jr. Identification of oncofetal antigen/immature laminin receptor protein epitopes that activate BALB/c mouse OFA/iLRP-specific effector and regulatory T cell clones. *Journal of Immunology* 176(5):2844-56, 2006 Mar 1.
- Rutland BM. Edgar MA. Horenstein MG. Hypomelanosis of Ito associated with precocious puberty. *Pediatric Neurology* 34(1):51-4, 2006 Jan.

Faculty Publications, Continued

- Sabatini PR. Horenstein MG. Oliveri CV. Gacek RR. Aneurysmal bone cyst of the temporal bone associated with reversible hemifacial paralysis. *American Journal of Otolaryngology* 26(4):261-4, 2005 Jul-Aug.
- Sayner SL. Alexeyev M. Dessauer CW. Stevens T. Soluble adenylyl cyclase reveals the significance of cAMP compartmentation on pulmonary microvascular endothelial cell barrier.[see comment]. *Circulation Research* 98(5):675-81, 2006.
- Solenkova NV. Solodushko V. Cohen MV. Downey JM. Endogenous adenosine protects preconditioned heart during early minutes of reperfusion by activating Akt. *American Journal of Physiology - Heart & Circulatory Physiology* 290(1):H441-9, 2006 Jan.
- Stevens T. Molecular and cellular determinants of lung endothelial cell heterogeneity. *Chest* 128(6 Suppl):558S-564S, 2005 Dec.
- Turrens JF. McCord JM. The iron-containing superoxide dismutases of trypanosomatidae [comment]. *Free Radical Biology & Medicine* 40(2):193-5, 2006.
- Umana E. Ahmed W. Fraley MA. Alpert MA. Comparison of oscillometric and intraarterial systolic and diastolic blood pressures in lean, overweight, and obese patients. *Angiology* 57(1):41-5, 2006 Jan-Feb.
- Wilkes JM. Clark LE. Herrera JL. Acetaminophen overdose in pregnancy. *Southern Medical Journal* 98(11):1118-22, 2005 Nov.
- Zhu B. Zhang LH. Zhao YM. Cui JR. Strada SJ. 8-chloroadenosine induced HL-60 cell growth inhibition, differentiation, and G(0)/G(1) arrest involves attenuated cyclin D1 and telomerase and up-regulated p21(WAF1/CIP1). *Journal of Cellular Biochemistry* 97(1):166-77, 2006 Jan 1.

Wireless Information System for Emergency Responders



WISER the Wireless Information System for Emergency Responders, is a system designed to assist first responders in hazardous material incidents. It provides a wide range of information on hazardous substances, including substance identification support, physical characteristics, human health information, and containment and suppression advice. It is available for download to a PDA and recently became available via an Internet connection. As a standalone application for a PDA, it runs on the Pocket PC and Palm OS. WebWiser, the web version, includes support for PDA browsers, including BlackBerry, Pocket PC, Palm, and some phones.

WISER is available at <http://wiser.nlm.nih.gov/> and includes a tutorial. You can search by the name or ID of the substance or WISER will help identify an unknown substance based on physical properties of the substance or signs/symptoms from exposure. Information is presented for 1st responder, HazMat personnel or for EMS. The categories of information include key information, identification, protective equipment, clothing and distances, reactivates/compatibilities and treatment, toxicity, health effects, carcinogenicity evidence, and other aspects.

-- Judy Burnham

Product Comparisons Available in Clinical Pharmacology



Using the Drug Products tab in Clinical Pharmacology, the user can select the Product Comparison subheading to compare ingredients in medications. For example, you may want to display a list of cough and cold products that contain pseudoephedrine and cough suppressants that are also sugar-free. Up to 4 classifications and 4 ingredient terms can be selected. The report generated will list criteria, i.e., "product contains" or "product does not contain". If you need help in using Clinical Pharmacology, contact the Reference Desk, 460-7044 or medlib@bbl.usouthal.edu

-- Judy Burnham

Nurses Duties in 1887

The following job description was given to floor nurses by a hospital in 1887.

In addition to caring for your 50 patients, each nurse will follow these regulations:

- Daily sweep and mop the floors of your ward, dust the patient's furniture and window sills.
 - Maintain an even temperature in your ward by bringing in a scuttle of coal for the day's business.
 - Light is important to observe the patient's condition. Therefore, each day fill kerosene lamps, clean chimneys and trim wicks. Wash the windows once a week.
 - The nurse's notes are important in aiding the physician's work. Make your pens carefully; you may whittle nibs to your individual taste.
 - Each nurse on day duty will report every day at 7 a.m. and leave at 8 p.m. except on the Sabbath on which day you will be off from 12 noon to 2 p.m.
 - Graduate nurses in good standing with the director of nurses will be given an evening off each week for courting purposes or two evenings a week if you go regularly to church.
 - Each nurse should lay aside from each pay day a goodly sum of her earnings for her benefits during her declining years so that she will not become a burden. For example, if you earn \$30 a month you should set aside \$15.
 - Any nurse who smokes, uses liquor in any form, gets her hair done at a beauty shop, or frequents dance halls will give the director of nurses good reason to suspect her worth, intentions and integrity.
 - The nurse who performs her labors and serves her patients and doctors without fault for five years will be given an increase of five cents a day, providing there are no hospital debts outstanding.
- Taken from CareNurse.com - <http://www.care-nurse.com/memories/1887.html>

-- Judy Burnham

Staff News



Diane Williams Retires

Diane Williams has announced her retirement effective May 31. Diane will be re-locating to Texas and plans to travel and settle in her new home. She has worked for the Biomedical Library for 23 years. In 1992, she received her MLS and joined the Biomedical Library faculty. Diane has worked most of those years in the Technical Services Department. Her experience and expertise will be missed and we at the Biomedical Library wish her the best!

With Diane's departure, **Ellen Sayed** will be moving into the position of Head of Collection Management and will supervise all aspects of the Technical Services area, including journals, collection development and bindery.



Clista Clanton will assume the responsibilities of Education Librarian and retain her supervision of the COM Computer Lab and the Multimedia Lab.

Justin Robertson will assume supervision of the Interlibrary Loan Department and will oversee the Biomedical Library's outreach program, the SOUTHmed Information Network. He will retain his responsibilities as WebMaster.



If you have any questions about who can meet your information needs, contact the Reference Desk, 460-7044 or medlib@bbl.usouthal.edu

Judy Burnham Chats

In February, **Judy Burnham** served as a guest "chatter" for the University of Southern Mississippi, Special Libraries distance education course. Using the Blackboard software (similar to ECollege), Burnham was able to communicate with the students about medical librarianship. She was asked questions about how medical libraries insure that their patrons have the latest information, classes to take in preparation for a career in medical librarianship, interaction with patients, outreach programs and associations for medical librarians. The Course Director reported to Burnham that the students were enthusiastic about the session and the field of medical librarianship. This is the second time Burnham has participated in this class.

Librarians Publish

Scopus database: a review, a publication by **Judy F. Burnham** in *Biomedical Digital Libraries* (2006, 3:1, 8 March 2006) has been noted as a "Highly Accessed" article. A "Highly Accessed" article is one that has been especially highly accessed, relative to their age, and the journal in which they were published. The articles reviews the Scopus database, one which the Biomedical Library subscribes, <http://www.scopus.com/scopus/home.url> With Scopus, the user can search citations by subject or by cited references.

Evaluating a chat reference service at the University of South Alabama's Baugh Biomedical Library, by **Clista Clanton, Geneva Staggs** and **Tom Williams** will be published both as an article in *Public Services Quarterly* and as a chapter in *Reference Assessment and Evaluation* by editors T. Diamond and M. Sanders.

Distinguished Librarians

Congratulations to **Ellen Sayed**! She has recently been designated as a Distinguished Member of the Academy of Health Information Professionals. Ellen joins Tom Williams, Judy Burnham, Jie Li and Geneva Staggs in bringing to five the number of your biomedical librarians who have achieved this highest level of Academy membership.

USA Biomedical Librarians Hold CyberClinic at MASA Meeting

The first weekend of May, the USA Biomedical Library hosted a CyberClinic at the annual meeting of the Medical Association of the State of Alabama (MASA) in Sandestin, Florida. The CyberClinic was located in the center of the exhibit hall and included laptops for the attendees to access their e-mail. Additionally, the Biomedical Librarians offered consultations to attendees on medical information topics, including PubMed, PDAs and evidence-based medicine. This is the fifth year that the USA Biomedical Library has hosted this event for MASA.



Staffing the CyberClinic were **Judy Burnham, Clista Clanton and Justin Robertson**. Providing technical support was **Robbie Runderson** (not pictured).



Justin Robertson assists Dr. Dan Raulerson with a PDA question.

-- **Judy Burnham**

Burnham Presentation on PDAs in Clinical Practice

At the 2006 meeting the Medical Association of the State of Alabama, Judy Burnham presented a session "Healthcare in the Palm of Your Hands: Using a PDA in Your Practice". Included in the presentation were tips on purchase of a PDA, health care applications and PDA resources. The PowerPoint slides of the presentation can be found at <http://southmed.usouthal.edu/library/masasite/> Links to PDA resources including drug databases, medical calculators, references and other resources can also be found on this page. This presentation can be given to your department. Just call Judy Burnham to arrange a convenient time, jburnham@jaguar1.usouthal.edu, (251) 460-6888.



Judy Burnham talks with Dr. Marsha Raulerson, President of MASA, following the presentation.

SOUTHmed Update

An article published in the Journal of the Medical Library Association in 2002* indicated that library information systems contribute to hospitals and academic health science centers in five broad concepts that correspond to the mission of the parent institution:

- Clinical care
- Management of operations
- Education
- Research and innovation
- Service

For hospitals that don't have an in-house medical library, the SOUTHmed Information Network, an outreach program of the USA Biomedical Library can provide services in each of these areas

Clinical care – literature searches, full-text articles and practice guidelines can provide up-to-date, reliable information in patient care areas and quality management

Management of operations – timely, accurate information on business aspects of the hospital operation can save time and money as well as helping to meet accreditation criteria

Education – Biomedical Librarians can provide classes on evidence based health care, searching the medical literature, PDAs in clinical practice and other topics

Research and innovation – literature searches by biomedical librarians and help to identify current research and opportunities for research projects

Service – quality, timely knowledge based information can help to improve the lives of patients, family and the institution's community

For further information on SOUTHmed services for your institution, contact Judy Burnham, jburnham@jaguar1.usouthal.edu, 251/460-6888.

*Abels EG, Cogdill KW, Zach L. The contributions of library and information services to hospitals and academic health sciences centers: a preliminary taxonomy. J Med Libr Assoc. 2002 Jul;90(3):276-84.